



Press Contact:
Krystle Brown
Marketing Director
978-726-8759
marketing@kingstongallery.com

Kingston Gallery
450 Harrison Ave, No. 43
Boston, MA 02118
617-423-4113

Kingston Gallery Associate Members Present

Space Between

In the Main Gallery, the Center Gallery, and the Project Space Gallery

June 30 to July 25, 2021

Opening Reception July 2, 2021, 5:00 - 8:00 pm

SOUTH END BOSTON, MA (May 1, 2021) – This year’s annual exhibition by Kingston Gallery’s Associate Artists, in the Main, Center, and Project Space Galleries, explores the various ways artists inhabit, capture, and distinguish space. Some of the works in ***Space Between*** share and engage with physical place, such as Amy Kaczur’s video pieces, *Messages from the Marsh*, Anne Sargent Walker’s paintings of tree branches against the sky, Jamie Bowman’s luscious landscapes or Ponnapa Prakkamakul’s architectural works. Other works use color and form to question surface and space, seen in minimalist paintings by Jane Lincoln and bold, biomorphic works by Diane Novetsky. Ingrid Ludt’s geometric paintings and Brian Littlefield’s rough and soft charcoal drawings choose to straddle the space between nature and abstraction. And in some works, time operates as media, linking duration with outcome, such as Rachel Thern’s rhythmic charcoal drawings or Rene Galvan’s meditation on time itself. Throughout the exhibition, all the artists entangle reality with possibility.

The mission of the Kingston Associate Members program is to expand the reach, representation, and opportunities of the gallery to more artists in Greater Boston. This annual exhibition is the culmination of a yearlong curatorial process organized by the Associate Members themselves.

Space Between features the following artists: Jamie Bowman, Rene Galvan, Amy Kaczur, Jane Lincoln, Brian Littlefield, Ingrid Ludt, Diane Novetsky, Ponnapa Prakkamakul, Rachel Thern, and Anne Sargent Walker. Full artist biographies and press images can be downloaded [here](#). Highlights from each artist are included below.

Kingston Gallery will participate in First Fridays on July 2, 2021, with social distancing guidelines in place. The public is welcome to visit the gallery from noon to 5 pm starting June 30th, the opening day.

Public programming, including artist talks, will be announced closer to the opening of the exhibition.



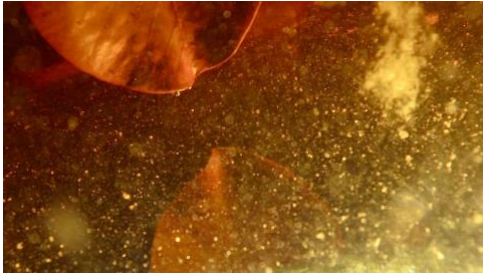
Jamie Bowman received her BFA in Studio Art from the State University of New York at Plattsburgh and an MFA in painting from the University of New Hampshire. Her awards include residencies at the Vermont Studio Center, Alfred and Trafford Klots International Program, and Mount Gretna School of Art (Four Pillars). She has exhibited her paintings in France, New York, and nationally. Jamie currently teaches drawing and painting at the University of New Hampshire and Pine Manor College.



R. Galvan is a conceptual artist based in Medford, MA. Their visual research and studio investigations focus on administration and on the role administrative systems play in the generation of a Latinx subjectivity with special focuses on queerness, masculinity and vanity. Their work manifests as sculpture, photography, book making, image-making, and critical research and writing. They recently completed residencies with Brashnar Creative Project (Skopje, N. Macedonia), Staccion Center for Contemporary Art (Prishtina, Kosovo) and the School of Machines, Making and Make Believe (Berlin, Germany). Galvan received a bachelor's degree from Brown University in history, and an MFA from the Rhode Island School of Design. Galvan was the 2018-2019 postdoctoral

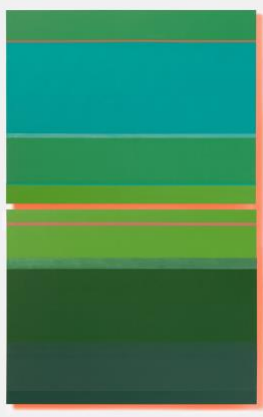
associate at Duke University's program in Latino/a Studies in the Global South. They have exhibited work at the National Humanities Center (Research Triangle Park, NC), the Urban Institute for Contemporary Arts (Grand Rapids, MI), and internationally at This Human World (Vienna, Austria), Galerie Harderbastei (Ingolstadt, Germany), and at the University of Coimbra (Coimbra, Portugal). Galvan was born in Brownsville, Texas.

Galvan describes their piece *Pass Times* as “a drawing installation that evolved from looking at vanitas paintings and reconsidering the value and purpose of the objects in those works. In place of an hourglass, I focus on a timepiece and transcribe the duration of looking at watches and clocks into drawings of time with layers of color. Individual drawings are framed and wall-mounted to align with the hours of a clock.”



Amy Kaczur's work is grounded in environmental concerns, local economies, community, and language. Her latest projects are fueled by a sense of urgency related to water issues, specifically coastal flood zones and rising sea levels. A video artist, her work has been produced for projection, installation, and online. She has exhibited and screened nationally and internationally, and she has participated in residency programs in California, Colorado, and New York. She holds an MFA from the University of California, Irvine, and a BFA from Tufts University.

Kaczur is exhibiting work from her project *Messages from the Marsh*, which includes three video pieces exploring the immersion of spaces inhabited, spaces transformed, and spaces lost. The water's skin, the separation of the realms of water and air, will be explored through underwater and over-water imaging in the looping videos. *Messages from the Marsh* focuses on coastal marsh locations on the east coast, areas that are projected to be lost underwater by 2050 through combinations of sea-level rise, tides, and storm surge.



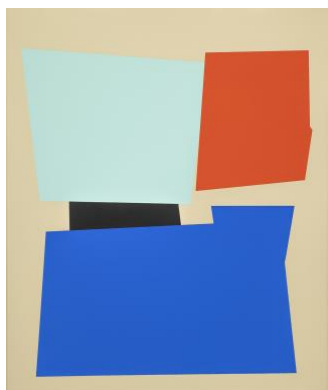
Jane Lincoln explores the astonishingly limitless qualities of color and invents series that focus on color relationships. Her work invites viewers to pause and observe the power of color. She received her MFA from Massachusetts College of Art and Design at the FAWC in Provincetown. Jane has had over thirty solo exhibitions and exhibited at over fifty museums and galleries. She is listed in *Art in America Guide* and *Who's Who in American Art*.

When creating the pieces for *Space Between*, Lincoln states: "Art lovers have had a year lacking in physical encounters with art. I wish my works to reward viewers, allowing them to experience changes in the paintings as they shift from far to near, and side to side. Art should be a live experience."



Brian Littlefield is interested in discovery through the sustained inquiry of painting and drawing. His work develops through a process where reiterated concerns and observations coalesce and ossify into marks and smudges. Recent exhibitions include *Analog* at HallSpace, and *Drawings* at Kingston Gallery, both in Boston. He received his MFA from Massachusetts College of Art and a BFA from the University of Massachusetts Dartmouth. An Assistant Professor of Art at Emmanuel College, he teaches drawing, painting, and printmaking. He lives and maintains an active studio practice in Boston.

According to the artist: "I am interested in the multivalent ambiguities of abstraction. My abstractions are not mathematical but more from nature. Drawing fosters a direct approach. Charcoal is equally malleable and stubborn, delicate and inelegant, definite and imprecise. Marks and smudges are asked to give integrity to the observation of small things."



Ingrid Ludt Ingrid Ludt was born in Auburn, New York in 1970. She received her BFA (Honors) at the Rochester Institute of Technology (New York) and her MFA at the University of Albany SUNY (New York). Solo exhibitions have been staged at venues in New York, New Orleans, and Massachusetts. Her work has been included in group exhibitions at the Kingston Museum of Contemporary Art (New York), the University Art Museum at SUNY Albany (New York), the Atlantic Center for the Arts (New Smyrna Beach, FL), the Contemporary Arts Center (North Adams, MA), James Cohan Gallery (New York) and Claire Oliver Gallery (New York). She has served as a guest lecturer at Middlebury College (Vermont) and Berkshire Community College (Massachusetts), and an Adjunct Professor of Intermediate and Advanced Drawing at SUNY Albany. Ludt is a three-time recipient of the SOS Stipend grant from the New York Foundation for the Arts, a Fellowship from the Atlantic Center for the Arts (New Smyrna Beach, FL), and has been a resident at the Viewing Program at The Drawing Center (New York), the Dorland Mountain Arts Colony (Temecula, CA), and the Foundry for Art, Design, and Culture (Cohoes, NY). Ludt lives and works in Sherborn, MA.

For *Space Between*, Ludt considers her relationship to space on the canvas, working to create a balance between color, form, and narrative within abstraction. The geometric forms are based on fragments of nature. A rock, a piece of tree bark, shells, small tokens found on her daily walks. These forms exist within the constraints of the space the canvas provides and within the physical world, but also suggest space beyond the limitations of the canvas itself.



Diane Novetsky is an abstract painter who uses bold, saturated colors and biomorphic forms evocative of the female body. She is a former graphic designer and business owner of Nova Design, as well as a longtime painting instructor. Her work has been widely shown throughout the region, including Artspace Maynard, the Art Complex Museum in Duxbury, Galatea Fine Arts, Danforth Museum of Art, Tufts University Aidekman Gallery, and the Boston Convention Center. A former member of Galatea Fine Arts, Diane is a new associate member of the Kingston Gallery. Her work has been published in *Artscope*, *Art New England*, the *Boston Globe*, and *Boston Voyager*. She received her BA from Wayne State University, Detroit, and her MFA from the University of Wisconsin, Madison. She resides in Somerville MA and is a founding member of the Brickbottom Artists Community. Diane has worked out of the Vernon Street Studios for over fifteen years.

Novetsky explores subtle elements that depart from perfect symmetry through unpredictability and surprise. By engaging with feminine biomorphic forms and shapes reminiscent of art movements such as Art Nouveau, Sixties psychedelia, and early Modernism, Novetsky connects the human body and the power to evoke its iconic sense of space.



Ponnapa Prakkamakul is a Thai contemporary visual artist and a landscape architect who uses the painting process as a tool to experience, understand, and connect with her surrounding environment. Through her work, she aims to gain a better understanding of cultural displacement and isolation issues as an immigrant. Ponnapa holds a

Master's degree in Landscape Architecture from the Rhode Island School of Design where she received Lowthorpe Fellowship Award upon graduation. She is also a recipient of David Bethuel Jamieson Artist of Color Residency & Fellowship at C-Scape Dune Shack in Provincetown, Residence Lab's artist-in-residence program at ACDC and the Pao Arts Center in Boston, and Manoog Family Artist Residency program at the Plumbing Museum in Watertown with four paintings in the museum's permanent collection. Her work has also been exhibited, published, and collected throughout the US and in Asia. Ponnapa currently lives and works in Massachusetts and is an associate member at Kingston Gallery.

In *Space Between*, Prakkamakul uses architecture, specifically bridges, to represent moments of pause. A bridge is a structure that connects to separate places with the goal to make a continuous journey and avoid a pause. Prakkamakul contemplates the bridge as a negative space between places. Looking at events from 2020 such as the global pandemic and political unrest in Thailand, Prakkamakul states, "Reflecting upon these in between moments of pause in time and emptiness in space, I contemplate how they would connect to the future places that we will be."



Rachel Thern is an abstract artist of organic and geometric forms, using the mediums of pen, charcoal, oil pastel, and oil on canvas. She studied for two years at the Maryland Institute College of Art and then completed a Bachelor of Fine Arts at the State University of New York, University at Buffalo, where she also received a BA in Psychology and a Master's Degree in Library and Information Science. She lives and works in Western Massachusetts.

According to Thern: "Repeatedly adding curves and organic shapes to a piece, I can arrive at an emergent pattern that shows my internal representation of the expanse of external space. This is how I visualize the underlying structure of nature. For *Space Between*, my thinking was influenced by the last year of lockdowns. The separation of what I was directly conscious of and what is known/happening in the outside world was more pronounced than usual. The space I was visualizing was something of an attempt to show the distance between the known/personal and the aspects of reality that are distant and not directly experienced."



Anne Sargent Walker's work has been exhibited extensively in New England and is included in collections throughout the country. She was awarded a Berkshire Taconic Foundation Artist's Resource Trust grant, and has participated in artist residencies in Ireland, Italy, and Vermont. She is represented by the Harmon Gallery in Wellfleet, Massachusetts. Walker grew up in the Boston area and Vermont. She is a graduate of Connecticut College and Tufts University. Her recent exhibition, *Can We Bear It*, was on view at Kingston Gallery in January 2020.

Walker's work explores the relationships between humans and nature. In her newest body of work on view in *Space Between*, Walker has been focusing on human's similarities with trees. She states, "Like humans, each one is unique and separate from one another, and yet science is discovering amazing ways of touching, communicating and cooperating among trees under the surface of the earth, even between different species. In this time of Pandemic, where we are separated from one another, trees create a metaphor for reaching out and cooperating to close the spaces."

About Kingston Gallery

An artist-run gallery incorporated in 1982, Kingston Gallery is Boston's second oldest such institution presently in operation. The gallery exhibits the work of Boston-area contemporary artists, and features a diverse range of media, including painting, photography, sculpture, and installation. Located in the SoWa district in the South End, the exhibitions are free and open to the public. Gallery hours are Wednesday–Sunday 12–5 pm, and by appointment. Our Covid-19 safety guidelines for visitors can be viewed [here](#).

For more information about Kingston Gallery, visit: www.kingstongallery.com

A selection of high-resolution images is available [here](#).

###